



The Haydon, 16 Minories, London, EC3N 1AX

£1,100 Per Week

8TH FLOOR TWO BED TWO BATH WITH AMAZING CITY VIEWS LOCATED WITHIN LUXURY CITY DEVELOPMENT LOCATED IN THE HEART OF EC3N

Our 2 bed apartment is located on the 8th floor and is dual aspect with South facing bedrooms and comprises spacious accommodation across 838 square feet and has been furnished/interior designed by the landlord to a very high standard

The finishes are of the highest quality including oak floors, natural stone and marble kitchens and bathrooms with the finest appliances. .

The Haydon is located moments from Aldgate Station, Tower Hill and all the shops, restaurants and bars the City of London has to offer. Residents benefit from a spa pool, gym, yoga studio, cinema and a 24/7 concierge located within the impressive double height residents lobby.

FURNISHED/INTERIOR DESIGNED TO A VERY HIGH STANDARD. AVAILABLE FROM 10.09.2026

- THE HAYDON A BOUTIQUE CITY DEVELOPMENT
- SPA POOL, GYM, ROOF GARDEN, CINEMA & 24-HOUR CONCIERGE
- NATURAL STONE & MARBLE FINISHES WITH OAK FLOORING
- VIEWS OF THE CITY OF LONDON
- MOMENTS FROM ALDGATE STATION IN EC3N
- AVAILABLE FROM 10.09.2026
- VERY HIGH SPEC KITCHEN AND BATHROOMS
- TWO BED & TWO BATH DUAL ASPECT APARTMENT
- COMFORT COOLING & UNDERFLOOR HEATING
- OVER 835 SQUARE FEET OF SPACE WITH AMPLE STORAGE

The Haydon, 16 Minories, London, EC3N 1AX



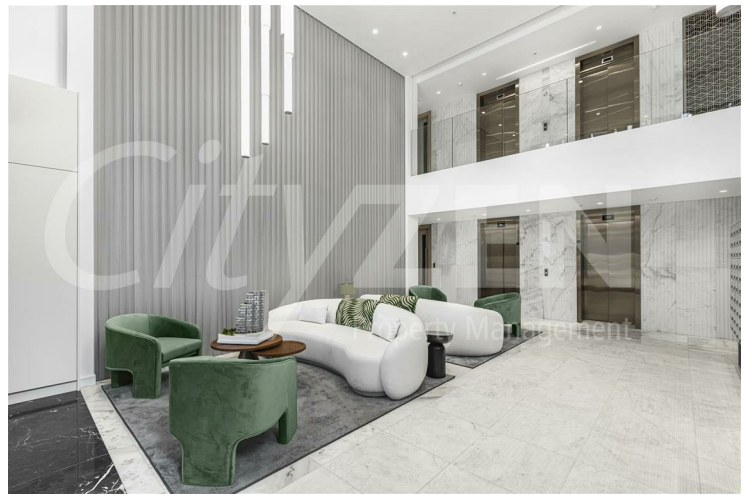
THE HAYDON



RESIDENTS ROOF GARDEN



RESIDENTS POOL (CGI)



LOBBY



RESIDENTS GYM (CGI)



RESIDENTS CINEMA

The Haydon, 16 Minories, London, EC3N 1AX



RESIDENTS ROOF GARDEN



RECEPTION ROOM



VIEW FROM ROOF GARDEN



RECEPTION ROOM



VIEW



RECEPTION ROOM

The Haydon, 16 Minories, London, EC3N 1AX



KITCHEN



BATHROOM



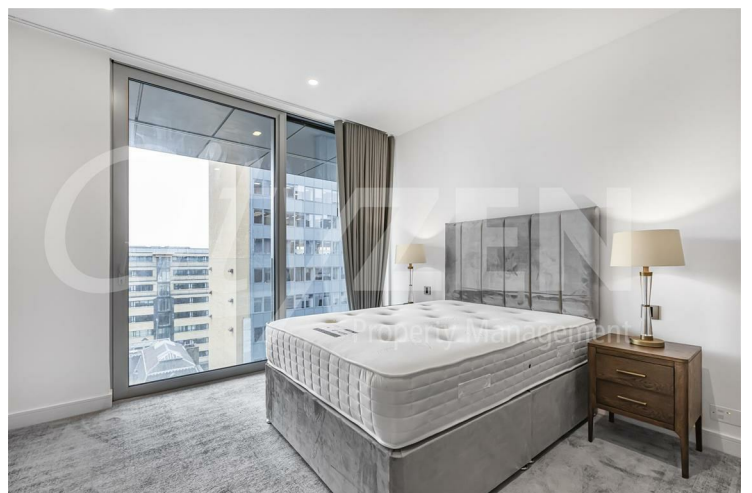
KITCHEN



RECEPTION ROOM



KITCHEN



BEDROOM

The Haydon, 16 Minories, London, EC3N 1AX



BEDROOM



EN SUITE SHOWER ROOM



BEDROOM



BEDROOM



ENSUITE/BEDROOM

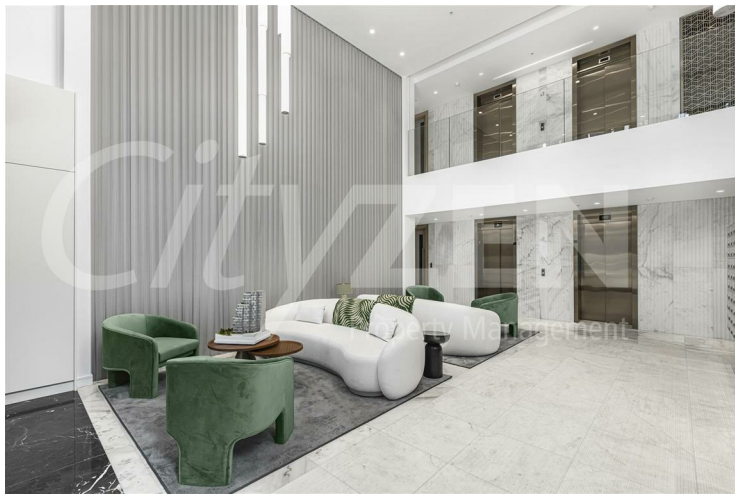


BEDROOM

The Haydon, 16 Minories, London, EC3N 1AX

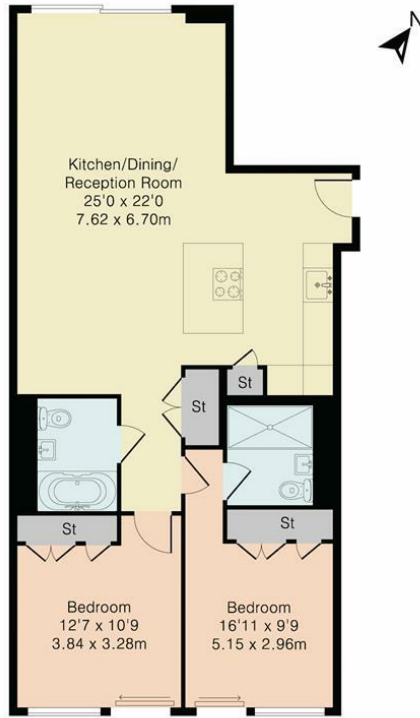


KITCHEN



LOBBY

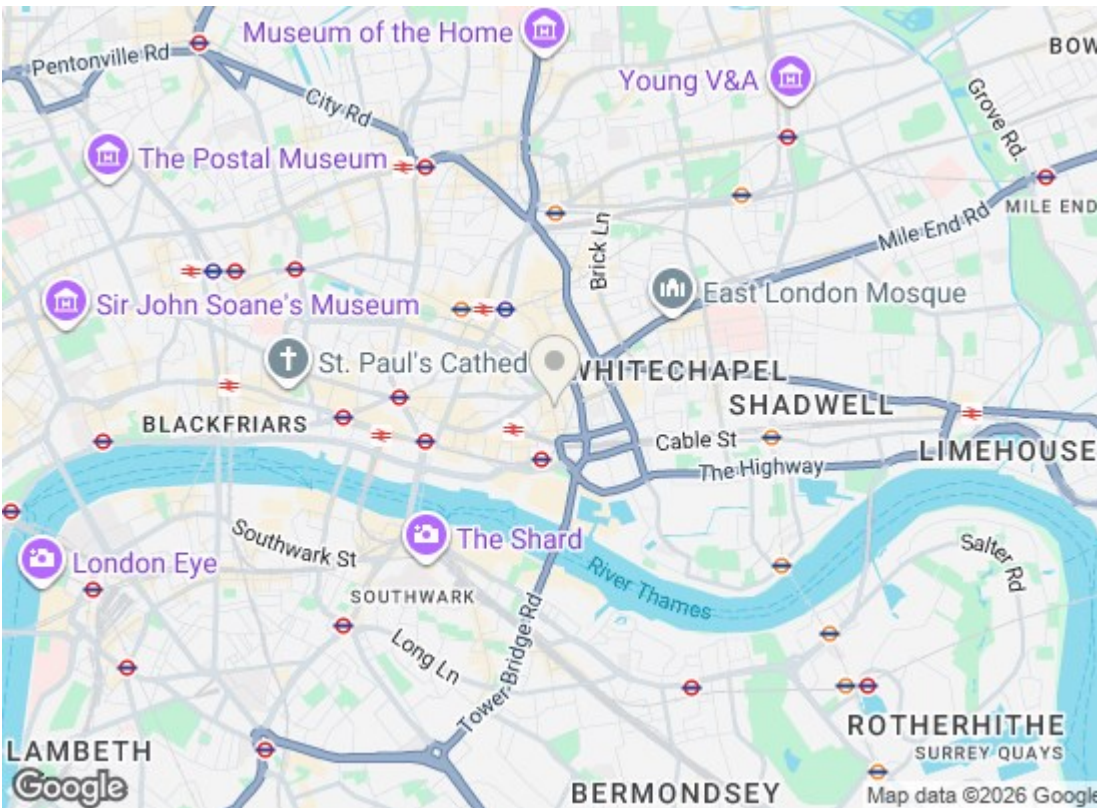
Approximate Gross Internal Area 876 sq ft – 81 sq m



Eighth Floor Flat



Although Pink Plan Ltd ensures the highest level of accuracy, measurements of doors, windows and rooms are approximate and no responsibility is taken for error, omission or misstatement. These plans are for representation purposes only as defined by RICS code of measuring practise. No guarantee is given on total square footage of the property within this plan. The figure icon is for initial guidance only and should not be relied on as a basis of valuation.



Energy Efficiency Rating		
	Current	Potential
Very energy efficient - lower running costs		
(92 plus) A		
(81-91) B	87	87
(69-80) C		
(55-68) D		
(39-54) E		
(21-38) F		
(1-20) G		
Not energy efficient - higher running costs		
EU Directive 2002/91/EC		
England & Wales		
Environmental Impact (CO ₂) Rating		
	Current	Potential
Very environmentally friendly - lower CO ₂ emissions		
(92 plus) A		
(81-91) B		
(69-80) C		
(55-68) D		
(39-54) E		
(21-38) F		
(1-20) G		
Not environmentally friendly - higher CO ₂ emissions		
EU Directive 2002/91/EC		
England & Wales		

We have prepared these property particulars as a general guide to a broad description of the property. They are not intended to constitute part of an offer or contract. We have not carried out a structural survey and the services, appliances and specific fittings have not been tested. All photographs, measurements, floorplans and distances referred to are given as a guide only and should not be relied upon for the purchase of carpets or any other fixtures or fittings. Lease details, service charges and ground rent (where applicable) and council tax are given as a guide only and should be checked and confirmed by your Solicitor prior to exchange of contracts.